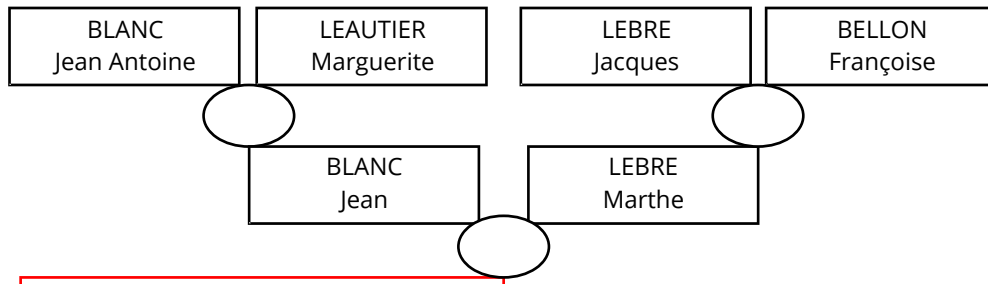
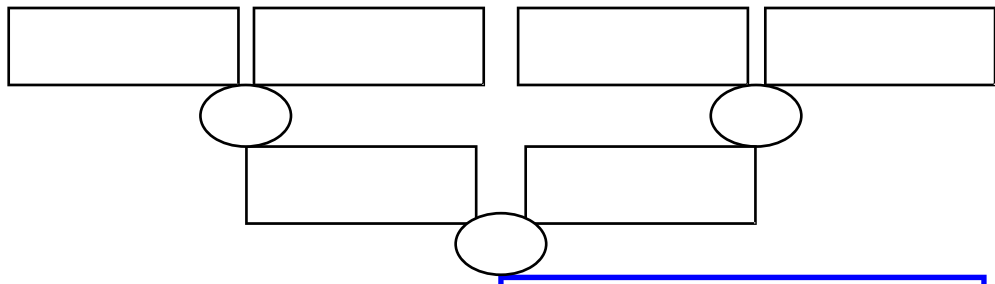
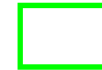


BLANC Jean Joseph

lieu manquant



BLANC Jean Joseph



BLANC Marie Elisa.

Naissance

Décès

Enfants

Conjoint

Table with 15 empty rows for recording birth dates (Naissance).

Table with 15 empty rows for recording death dates (Décès).

Table with 15 rows for recording children (Enfants), each row ending with an arrow pointing to an oval for a name.

Table with 15 empty rows for recording spouses (Conjoint).