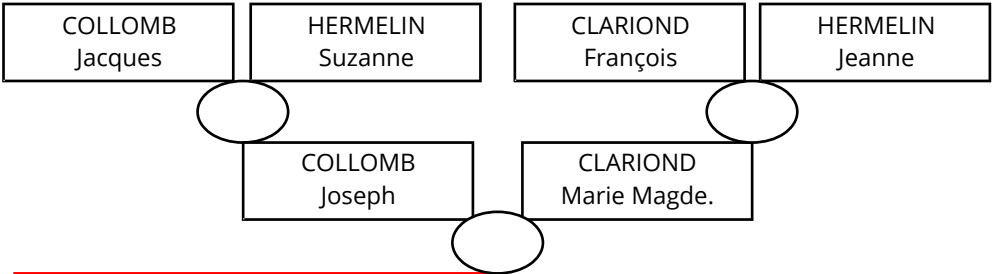
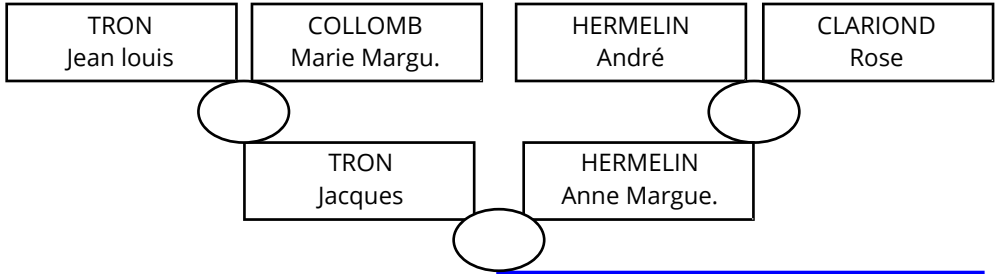


TRON Jean Louis

Le Laverq Le Chastel



TRON Jean Louis



COLLOMB Suzanne Fra.

Table with 14 rows for birth information (Naissance). Header: Naissance vers le 27/04/1818.

Table with 14 rows for death information (Décès). Header: Décès après le 28/11/1877.

Table with 14 rows for children information (Enfants). Header: Enfants. Row 1: 1 TRON Hyacinthe L. Each row has an arrow pointing to an empty oval.

Table with 14 rows for spouse information (Conjoint). Header: Conjoint. Row 1: LEAUTIER Marie Magde.